



Exam : 642-586

Title : Cisco Advanced Wireless LAN for
System Engineers

Ver : 08-21-07

QUESTION 1:

Certkiller .com is adding a new branch office with 60 access points and 120 users that requires WDS to support a wireless VoIP application on a single subnet. Additionally, the customer requires local authentication services to provide authentication capability in the event of a WAN failure. Which product will support the customer requirements?

- A. Cisco 2811 Integrated Services Router
- B. Cisco 3745 Multiservice Access Router
- C. Cisco 3845 Integrated Services Router
- D. Cisco 2851 Integrated Services Router

Answer: C

QUESTION 2:

The Cisco wireless LAN controller supports multiple secure authentication types. Which authentication type provides Layer 3 security?

- A. WPA2
- B. Cranite
- C. AirFortress
- D. IPSec

Answer: D

QUESTION 3:

The Cisco WCS logs which two security events? (Choose two.)

- A. security misconfigurations on the controller
- B. CKIP/MIC failures
- C. rogue access points
- D. wireless protocol analyzer detection
- E. rogue clients

Answer: C,E

QUESTION 4:

Which EAP authentication is used by the Cisco Wireless LAN controller for local authentication?

- A. EAP-MD5
- B. No EAP authentication is used.

- C. EAP-TLS
- D. PEAP-MSCHAP
- E. PEAP-GTC

Answer: B

QUESTION 5:

Which method is used to determine the best path across a wireless mesh network?

- A. AWP
- B. hop count
- C. STP
- D. EIGRP

Answer: A

QUESTION 6:

OFDM provides which improvement over DSSS in the 2.4-GHz range?

- A. greater resistance to multipath interference
- B. more bandwidth per channel
- C. more nonoverlapping channels
- D. full duplex communication

Answer: A

QUESTION 7:

DRAG DROP

You work as a network technician at Certkiller .com. Your boss, Mrs. Certkiller, is curious about the Cisco Compatible Extensions program. You tell her that it is divided into three phases.

Match the phases with the appropriate definitions.

Use each phase once and only once.

Phases, select from these

Phase 1

Phase 2

Phase 3

Definitions

Design: Cisco provides support to design team to ensure proper design of product.

Specification: Cisco provides specification to WLAN silicon providers.

Compatibility: Approved products are mated

Licensing: One-time licensing fee is collected.

Interoperability Test: Devices are tested by approved third-party vendor against the specification

Phases, place here

Place here

Place here

Place here

Place here

Place here

Answer:

Definitions

Design: Cisco provides support to design team to ensure proper design of product.

Specification: Cisco provides specification to WLAN silicon providers.

Compatibility: Approved products are mated

Licensing: One-time licensing fee is collected.

Interoperability Test: Devices are tested by approved third-party vendor against the specification

Phases, place here

Place here

Phase 1

Phase 3

Place here

Phase 2

QUESTION 8:

Which two activities are included in a Wireless Security Posture Assessment? (Choose two.)

- A. scan all host systems and log all open ports
- B. check access point configurations and compare them against recommended security practices
- C. ensure that the client is using a strong password policy
- D. check all systems to ensure that the patches are being applied in a timely manner
- E. find WLAN traffic that is leaking from the customer building

Answer: B,E

QUESTION 9:

Which three authentication methods are supported on the WLSE Express local

authentication server? (Choose three.)

- A. EAP-TTLS
- B. EAP-Cisco Wireless (LEAP)
- C. EAP-SIM
- D. EAP-FAST
- E. EAP-MD5
- F. EAP-PEAP

Answer: B,D,F

QUESTION 10:

DRAG DROP

You work as a network technician at Certkiller .com. Your boss, Mrs. Certkiller, is curious about the advanced feature set products. You are required to detect and move the correct three.

Select from these	Advanced Feaure Set products
Wireless Services Module	Place here
Cisco Wireless Control System	Place here
Wireless Domain Services	Place here
Cisco Aironet 1130AG Series access point	
CiscoWorks Wireless LAN Solution Engine	
CiscoWorks Wireless LAN Solution Engine	

Answer:

Advanced Feaure Set products

- Wireless Services Module
- Cisco Wireless Control System
- CiscoWorks Wireless LAN Solution Engine

Explanation:

The "CiscoWorks Wireless LAN Solution Engine" is the management of the Core Feature set products.

This is the description for the class -"Cisco Wireless LAN Advanced Topics (CWLAT)v1.0":

This course is designed to give students a firm understanding of the components, features and proper deployment of the Cisco Unified Wireless Network. The course focuses on advanced WLAN design, integrating Cisco wireless components into a wired infrastructure. Deployment topics include managing the WLAN by using the Cisco Wireless Control System (WCS) to manage the advanced feature set and using the CiscoWorks Wireless LAN Solutions Engine (WLSE) to manage the core feature set.

QUESTION 11:

Certkiller .com wants to use the 4.9-GHz band to provide connectivity for public service vehicles. The customer also wishes to have 802.11 wireless connectivity from PDAs to the vehicles. Which configuration option would provide the desired support?

- A. 4.9-GHz interface in bridge mode, 802.11 interface in bridge mode
- B. 4.9-GHz interface in bridge mode, 802.11 interface in access point mode
- C. 4.9-GHz interface in access point mode, 802.11 interface in access point mode
- D. 4.9-GHz interface in access point mode, 802.11 interface in bridge mode

Answer: B

QUESTION 12:

Which three faults are generated by radio management? (Choose three.)

- A. interference detection
- B. AAA server availability
- C. ad-hoc networks
- D. security misconfiguration
- E. friendly access point
- F. rogue access point

Answer: A,C,F

QUESTION 13:

Certkiller .com in the United States requires connectivity between two campus locations that are located 6 miles (9.65 km) apart. The customer also needs a minimum data rate of 54 Mbps in an area that is known to have 2.4-GHz interference. Choose two appropriate devices that will provide a bridge link and avoid the interference. (Choose two.)

- A. Cisco Aironet 1400 Series wireless bridge
- B. Cisco Aironet 1210 Series access point
- C. Cisco Aironet 1100 Series access point
- D. Cisco Aironet 1242AG Access Point
- E. Cisco Aironet 1300 Series outdoor access point/bridge

Answer: A,D

QUESTION 14:

A wireless using core feature set products uses which protocol for radio management?

- A. LWAPP
- B. CCKM
- C. WLCCP
- D. SNMP

Answer: C

QUESTION 15:

Which two statements correctly describe the Cisco Catalyst Wireless Services Module (WiSM)? (Choose two.)

- A. It requires a supervisor 32 or 720.
- B. It has a maximum of 24 modules per mobility group.
- C. It has a maximum of 18 modules per mobility group.
- D. It requires a supervisor 720 only.
- E. It requires a supervisor 32 only.
- F. It has a maximum of 12 modules per mobility group.

Answer: D,F

QUESTION 16:

How is the bridge group name used in a wireless mesh deployment?

- A. It is used to retrieve the secret shared key.
- B. It is used as a password in communication preceding LWAPP.
- C. It is used to join the outdoor mesh network with the controller mobility group.
- D. It logically groups access points to avoid interference from neighboring networks.

Answer: D

QUESTION 17:

Which device, which uses advanced feature set products, encrypts and decrypts client data?

- A. switch
- B. access point
- C. Cisco WCS
- D. controller

Answer: B

QUESTION 18:

The Cisco 2700 Series wireless location appliance can store up to how many days of historical information?

- A. 15
- B. 30
- C. 60
- D. 90

Answer: B

QUESTION 19:

How many WLAN controllers can Cisco WCS, with a base default license, support?

- A. 75
- B. 125
- C. 50
- D. 100

Answer: C

QUESTION 20:

Certkiller .com brings you a previously completed site survey for the initial wireless implementation from 12 months ago. The customer currently has six access points deployed in the warehouse. The survey shows that the installed coverage provides for a 15-percent overlap between cells at 5.5 Mbps, and a 5-percent overlap at 11 Mbps. This solution has proven to provide adequate coverage and roaming capabilities for the data applications. However, the customer has recently moved to a VoIP telephony solution and has attempted to add seven Cisco 7920 wireless IP phones with limited success. Why has the customer only had limited success with the current deployment to meet the data needs?

- A. inadequate throughput

- B. inadequate overlap
- C. inadequate data rate
- D. too many Cisco 7920 wireless IP phones per access point

Answer: B

QUESTION 21:

Which authentication mechanism was introduced in Cisco Compatible Extensions program version 2?

- A. CKIP and CMIC
- B. PEAP-GTC
- C. AES
- D. EAP-Cisco Wireless (LEAP)

Answer: B

QUESTION 22:

How many prior configuration versions can be archived on the WLSE?

- A. four
- B. six
- C. eight
- D. two

Answer: A

QUESTION 23:

Which WEP key protection method was introduced in Cisco Compatible Extensions program version 1?

- A. AES
- B. CKIP and CMIC
- C. radio management
- D. EAP-Cisco Wireless (LEAP)

Answer: B

QUESTION 24:

Which property of the advanced feature set products protects against the loss of network information, such as passwords and IP addressing schemes, in case of access point theft?

- A. The access point and the controller use X.509 certificates to verify identity.
- B. The controller does not retain its configuration when it is removed from the network.
- C. All management traffic is encrypted between the access point and the controller.
- D. The access point does not retain its configuration when it is removed from the network.

Answer: D

QUESTION 25:

Certkiller .com has a small remote site with 10 access points. In which scenario would a WLSE Express be appropriate to implement?

- A. EAP-Cisco Wireless (LEAP) security is required and no external AAA server is available.
- B. EAP-FAST security is required and an AAA server is available.
- C. EAP-Cisco Wireless (LEAP) security is required and an external AAA server is available.
- D. EAP-FAST security is required and no external AAA server is available.

Answer: D

QUESTION 26:

Which three authentication methods are supported by Cisco Secure ACS? (Choose three.)

- A. EAP-SIM
- B. EAP-Cisco Wireless (LEAP)
- C. EAP-FAST
- D. EAP-MD5
- E. EAP-PEAP
- F. EAP-TTLS

Answer: B,C,E

QUESTION 27:

Which proposed IEEE 802.11 standard will increase the data rate beyond 54 Mbps?

- A. 802.11j
- B. 802.11n
- C. 802.11s
- D. 802.11c

Answer: B

QUESTION 28:

When using Cisco advanced feature set products, integrated guest access supports how many users?

- A. 2000
- B. 1500
- C. 2500
- D. 1000

Answer: C

QUESTION 29:

Certkiller .com is initially deploying 37 lightweight access points per site with local WLAN controllers at each site. If the customer plans to expand to a maximum of 45 access points, which WLAN controller is most appropriate?

- A. Cisco 4136 Wireless LAN Controller
- B. Cisco 4402 Wireless LAN Controller
- C. Cisco 2006 Wireless LAN Controller
- D. Cisco 4404 Wireless LAN Controller

Answer: B

QUESTION 30:

In a mesh network, what is the recommended hop count limit of a pole-top access point from its associated roof-top root access point?

- A. 4
- B. 2
- C. 10
- D. 8

Answer: A

QUESTION 31:

What is a component of the Cisco trust and identity management system?

- A. CiscoWorks WLSE
- B. Cisco WLAN controller
- C. Cisco WCS
- D. Cisco Secure ACS

Answer: D

QUESTION 32:

Which two statements correctly describe the Cisco Catalyst Wireless Services Module (WiSM)? (Choose two.)

- A. It has a maximum of five modules per chassis.
- B. It supports up to 100 access points per module.
- C. It has a maximum of four modules per chassis.
- D. It has a maximum of six modules per chassis.
- E. It supports up to 200 access points per module.
- F. It supports up to 300 access points per module.

Answer: A,F

QUESTION 33:

The Worthington, Lane, Andrews and Newton manufacturing company has three facilities that are located in the city of Columbia, South Carolina, with the corporate office located in downtown Columbia. The R&D facility is located on the north side of the city 4 miles (6.4 km) from the corporate office, and is leasing office space in a five-story building. The manufacturing facility is located 6 miles (9.6 km) to the northwest of the corporate office and 2 miles (3.2 km) west of the R&D facility. Users at the manufacturing plant require network connectivity for file sharing and e-mailing, while the users at the R&D facility require high-speed Internet access with the ability to send large CAD drawings to the corporate office and large machine control files to the manufacturing facility. Presently, the manufacturing facility is connected to the corporate office by a 64-Kbps leased-line, and the R&D facility is connected to both the corporate office and the manufacturing facility by a dedicated T1 line. The company plans to add a second line of development at the R&D facility within the next 60 days. However, the current T1 lines are at a constant 70-percent utilization rate. Currently, a T1 line costs US\$750 per month for each line. The current projected lead time for installation of additional lines is 90 days, if the current cable plant will support it. A wireless bridging solution would provide which three benefits to the customer? (Choose three.)

- A. rapid deployment
- B. increased bandwidth
- C. lower total cost of ownership
- D. immunity to weather
- E. elimination of monthly charges
- F. guaranteed bandwidth

Answer: A,B,C

QUESTION 34:

The Cisco 4404 Wireless LAN Controller will support a maximum of how many REAPs?

- A. 100
- B. 150
- C. 200
- D. 50

Answer: A

QUESTION 35:

In a non-WDS environment, the local authentication services on an autonomous access point can be used to authenticate which three devices? (Choose three.)

- A. root access point
- B. workgroup bridge
- C. clients that are using the native Microsoft wireless supplicant
- D. nonroot bridge
- E. root bridge
- F. repeater access point

Answer: B,D,F

QUESTION 36:

Which advanced feature set device is provided with a Kensington lock slot?

- A. switch
- B. access point
- C. Cisco WCS
- D. controller

Answer: B

QUESTION 37:

Which two threats are detected by the Cisco WCS? (Choose two.)

- A. rogue access points
- B. spam
- C. out-of-date antivirus definitions
- D. denial of service attacks
- E. malware

Answer: A,D

QUESTION 38:

The Cisco 3200 Series mobile access router has integrated wireless support for which two frequency ranges? (Choose two.)

- A. 5.725 to 5.825 GHz
- B. 5.150 to 5.250 GHz
- C. 900 to 928 MHz
- D. 2.400 to 2.4835 GHz
- E. 4.940 to 4.990 GHz

Answer: D,E

QUESTION 39:

How many access points can be placed on a floor map in Cisco WCS?

- A. 200
- B. 50
- C. 150
- D. 100

Answer: D

QUESTION 40:

Which feature was introduced in Cisco Compatible Extensions program version 1?

- A. EAP-FAST
- B. radio management
- C. EAP-Cisco Wireless (LEAP)
- D. WMM

Answer: C

QUESTION 41:

When using advanced feature set products and web authentication, integrated guest access allows secure guest authentication via which protocol?

- A. PEAP-GTC
- B. HTTPS
- C. Cisco Wireless

D. IPSec

Answer: B

QUESTION 42:

Which threat is detected by the WLSE?

- A. rogue access points
- B. malware
- C. phishing attacks
- D. out-of-date antivirus definitions

Answer: A

QUESTION 43:

Centralized authentication with Cisco Secure ACS provides which security benefit to the WLAN?

- A. MD5
- B. PAP
- C. PEAP-GTC
- D. CHAP

Answer: C

QUESTION 44:

Which two threats are detected by means of the Cisco Network Admission Control?
(Choose two.)

- A. spam
- B. malware
- C. denial of service attacks
- D. rogue access points
- E. out-of-date antivirus definitions

Answer: B,E

QUESTION 45:

Typical mesh access-point placements in a suburban environment should be separated by how many feet?

- A. 300 to 350 feet

- B. 800 to 1000 feet
- C. the average reachable distance that a backhaul link is capable of establishing
- D. 100 to 150 feet

Answer: A

QUESTION 46:

Which statement describes how RSSI information is processed in a WLAN with a location manager using advanced feature set products?

- A. Access points aggregate RSSI information.
- B. The location appliance computes the RSSI information.
- C. WLAN controllers compute RSSI information.
- D. The WCS collects the RSSI information from the 802.11 devices.

Answer: B

Explanation:

The answer should be "The location appliance computes the RSSI information."

The APs collect not aggregate - the controllers aggregate. I am using the same link that it stated. Look at the next line:

http://www.cisco.com/en/US/products/ps6386/products_qanda_item09186a008078ece3.shtml#newfaq

A. The Cisco Wireless Location Appliance uses the same Cisco lightweight access points that deliver traffic as location "readers" for 802.11 wireless clients and Wi-Fi tags. These access points collect received-signal-strength-indication (RSSI) information from all Wi-Fi devices, which include Wi-Fi enabled laptops, voice handsets, Wi-Fi tags, rogue (unauthorized) devices, and rogue access points. The collected RSSI information is then sent through the Lightweight Access Point Protocol (LWAPP) to the Cisco wireless LAN controllers or certain wireless integrated switches or routers. The Cisco wireless LAN controllers then aggregate the RSSI information and send it to the Cisco Wireless Location Appliance through Simple Network Management Protocol (SNMP). The Cisco Wireless Location Appliance performs location computations based on the RSSI information received from the Cisco wireless LAN controllers. The Cisco wireless LAN controllers that gather the RSSI information must be associated with the Cisco Wireless Location Appliance.

QUESTION 47:

DRAG DROP

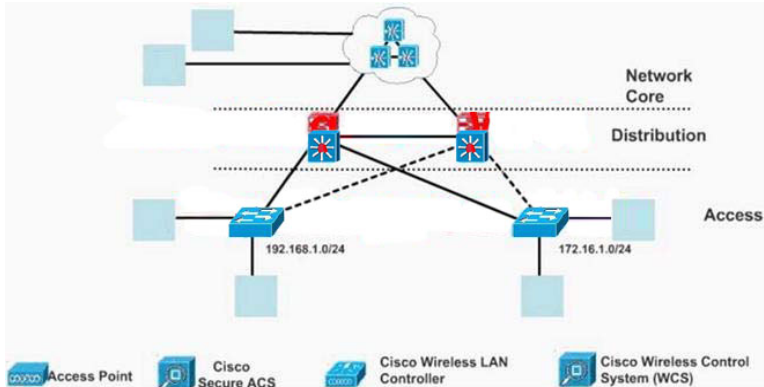
You work as a network technician at Certkiller .com. Your Certkiller trainee asks you to place the advance feature set product icon in the appropriate location on the following diagram for a Layer 2 transport mode.

Each item can be used several times.

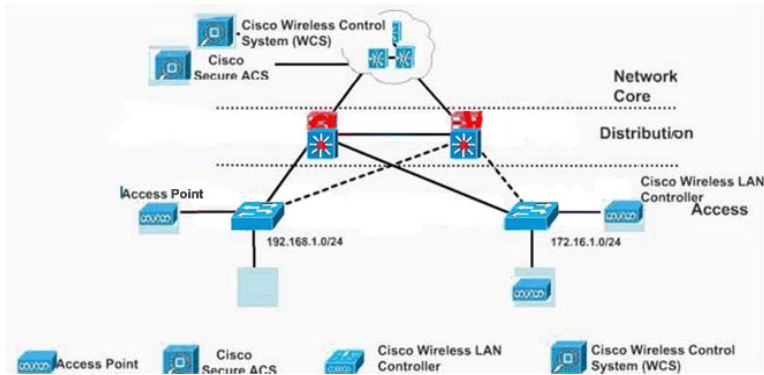
There is one controller and one AP per subnet.

Choices:

1. Access Point (AP)
2. Cisco Secure ACS



Answer:



QUESTION 48:

DRAG DROP

You work as a network technician at Certkiller .com. Your boss, Mrs. Certkiller, is curious about the wireless core feature set products. You need to select the three correct products. Select three.

Products, select from these

- Cisco Aironet 1000 Series lightweight access point
- Cisco Wireless Control System
- Wireless Domain Services
- CiscoWorks Wireless LAN Solution Engine
- Cisco Aironet 1100 Series access point

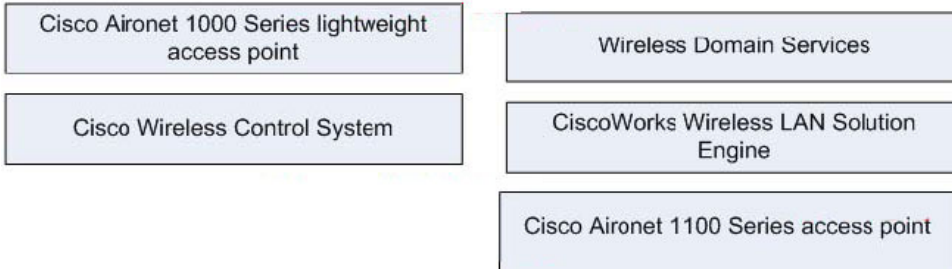
Wireless care feature set products

- Place here
- Place here
- Place here

Answer:

Products, select from these

Wireless care feature set products



QUESTION 49:

A wireless security assessment has been performed for a network that is composed of Windows 2000 and Windows XP wireless clients. The client wishes to use 802.1x authentication using certificate services. Which EAP types are appropriate?

- A. PEAP-GTC and EAP-FAST
- B. EAP-Cisco Wireless (LEAP) and EAP-FAST
- C. EAP-Cisco Wireless (LEAP) and PEAP-GTC
- D. PEAP-MSCHAP and EAP-Cisco Wireless (LEAP)

Answer: B

QUESTION 50:

Which security protocols are supported by a REAP in standalone mode?

- A. WPA-PSK, PEAP MSCHAP, and WEP
- B. TLS, WEP, and WPA CKIP
- C. WEP, WPA-PSK, and WPA2-PSK
- D. WPA AES, WPA-PSK, and WPA2-PSK

Answer: C

QUESTION 51:

Which security feature was introduced in Cisco Compatible Extensions program version 3?

- A. CKIP and CMIC
- B. AES
- C. radio management
- D. EAP-Cisco Wireless (LEAP)

Answer: B

QUESTION 52:

When a wireless controller loses connectivity to a remote Cisco Aironet 1030 Lightweight Access Point, what will be the next step for that remote access point?

- A. continue to provide local connectivity
- B. lose its configuration
- C. support no more than 10 wireless clients
- D. disconnect all associated clients

Answer: A

QUESTION 53:

The local authentication service on an autonomous access point supports which two authentication types? (Choose two.)

- A. EAP-TLS
- B. EAP-FAST
- C. PEAP-MSCHAP
- D. PEAP-GTC
- E. EAP-Cisco Wireless (LEAP)

Answer: B,E

QUESTION 54:

What is used to encrypt data traffic between the access point and the controller?

- A. Data traffic is not encrypted.
- B. Data traffic is encrypted with AES CBMAC.
- C. Data traffic is encrypted with AES CCMP.
- D. Data traffic is encrypted with MD5 hashing.

Answer: A

QUESTION 55:

The WLSE can update firmware on which two devices? (Choose two.)

- A. bridge
- B. access point
- C. switch
- D. router
- E. client

Answer: A,B

QUESTION 56:

Which two key features are unique to the wireless advanced feature set using lightweight access points? (Choose two.)

- A. access point participation in RF management
- B. fast secure roaming
- C. dynamic RF control without advanced management
- D. rogue access point detection
- E. access point registration via digital certificate

Answer: C,E

QUESTION 57:

Which feature was introduced in Cisco Compatible Extensions program version 2?

- A. EAP-FAST
- B. EAP-Cisco Wireless (LEAP)
- C. WMM
- D. radio management

Answer: D

QUESTION 58:

Which property of the advanced feature set products prevents rogue access points from attaching to the network?

- A. The access point does not retain its configuration when it is removed from the network.
- B. All management traffic is encrypted between the access point and the controller.
- C. The access point and the controller use X.509 certificates to verify identity.
- D. The controller does not retain its configuration when it is removed from the network.

Answer: C

QUESTION 59:

When using the Cisco Wireless IP Phone 7920, a separate voice VLAN is recommended. Which two security statements indicate why? (Choose two.)

- A. The Cisco Wireless IP Phone 7920 uses Cisco Wireless (LEAP).

- B. The Cisco Wireless IP Phone 7920 uses 802.11b.
- C. Quality of service can be applied to the voice VLAN.
- D. The voice VLAN can provide Layer 3 fast secure roaming.
- E. Appropriate ACLs can be applied to the voice VLAN.

Answer: A,E

QUESTION 60:

Which two AAA servers are supported by the Cisco wireless LAN controller? (Choose two.)

- A. Meetinghouse
- B. Interlink
- C. Microsoft Internet Authentication Service
- D. Cisco Secure ACS
- E. Aradial Technologies

Answer: C,D

QUESTION 61:

Which three are key components of a site survey? (Choose three.)

- A. documentation
- B. client configuration
- C. pre-survey assessment
- D. coverage verification
- E. facility walkthrough
- F. access point staging

Answer: A,C,E

QUESTION 62:

Which component of the Cisco Integrated Security Solution is responsible for preventing Day Zero security risks, such as Internet worms?

- A. Cisco Security Agent
- B. Cisco Secure ACS
- C. Cisco Catalyst 6500 Series wireless LAN services module
- D. CiscoWorks Wireless LAN Solution Engine

Answer: A

QUESTION 63:

Certkiller .com brings you a previously completed site survey for the initial wireless implementation from 12 months ago. The customer currently has six access points deployed in the facility. The survey shows that installed coverage provides for a 15-percent overlap between cells at a data rate of 5.5 Mbps, and a 5-percent overlap at a data rate of 11 Mbps. In this scenario, the site survey shows that this installation would be adequate to support what?

- A. data collection
- B. 802.11a clients
- C. videoconferencing
- D. wireless VoIP

Answer: A

QUESTION 64:

When designing a wireless VoIP network and using the G.711 codec, what is the maximum number of concurrent calls for a single 802.11b cell?

- A. 9
- B. 7
- C. 5
- D. 11

Answer: B

QUESTION 65:

The WLSE Express local authentication server supports a maximum how many clients?

- A. 2500
- B. 1000
- C. 300
- D. 100

Answer: B

QUESTION 66:

Implementing Wireless Domain Services on an autonomous access point provides which two benefits? (Choose two.)

- A. quality of service
- B. fast secure roaming

- C. local authentication services
- D. radio management
- E. VLAN support

Answer: B,D

QUESTION 67:

Which product manages the Cisco 2700 Series wireless location appliance?

- A. wireless LAN controller
- B. integrated services router
- C. Wireless Control System
- D. CiscoWorks for Mobile Wireless

Answer: C

QUESTION 68:

The WLAN IDS that is provided by Cisco protects the network if a client has not received the proper antivirus updates. Which action is taken by the WLAN IDS until the client has received the updates?

- A. remotely disable the client network card
- B. quarantine the client
- C. issue a remote shutdown command to the client
- D. disassociate the client

Answer: B

QUESTION 69:

When designing a wireless VoIP network, what is the recommended lowest data rate?

- A. 1 Mbps
- B. 11 Mbps
- C. 5.5 Mbps
- D. 2 Mbps

Answer: B

QUESTION 70:

An integrated services router that is configured as a backup RADIUS server for wireless clients can support a maximum of how many user accounts?

- A. 400 to 500
- B. 900 to 1000
- C. 1 to 50
- D. none

Answer: B

QUESTION 71:

In order for a controller-based access point to be allowed to participate in aggressive load balancing, it must have heard the client within how many seconds?

- A. 1
- B. 5
- C. 10
- D. 15

Answer:

QUESTION 72:

You are troubleshooting a problem with a Cisco 7920 wireless IP phone on a standalone WLAN. The phone rings but, when you answer, the call is dropped. What may cause this problem?

- A. The minimum data rate is not set to 11 Mbps.
- B. An address resolution protocol is enabled.
- C. Publicly Secure Packet forwarding is enabled.
- D. The access point is set to the least congested channel.

Answer:

QUESTION 73:

A Cisco Wireless Location Appliance has been added to track RFID tags placed on laptops being used in a school. Classrooms at the school have concrete block walls. During testing, you discover that the accuracy of the system needs to be improved. You decide to edit the map in the Cisco WCS to add the interior walls. How many interior walls can you add to improve the accuracy of the location appliance?

- A. 50
- B. 100
- C. 150
- D. 200

Answer:

QUESTION 74:

The IOS of a North American Cisco Aironet 1130AG Series standalone access point has become corrupt. You must therefore reload the TFTP firmware. Before you press and hold the MODE button, you should verify that the file name is which of the following?

- A. c1130-k9w7-tar.boot
- B. c1130-k9w7-tar.default
- C. c1130-k9w7-tar.recover
- D. c1130-k9w7-tar.123-7.JA1.tar

Answer:

QUESTION 75:

How many WLANs can a Cisco Aironet 1242 in H-REAP mode support when actively connected to a wireless controller?

- A. 4
- B. 8
- C. 16
- D. 32

Answer:

QUESTION 76:

Cisco WCS version 4.0 is supported on which operating system?

- A. Solaris 10
- B. Vista
- C. Windows XP Pro
- D. Windows 2000 SP4
- E. Windows Server 2003

Answer:

QUESTION 77:

A mobility group is created by a Cisco WLCM and 4402 Series Wireless LAN Controller. A client that is anchored on the Cisco WLCM roams to an access point on the 4402 controller. You then run a debug command on the 4402 controller. Which message would best describe the establishment of the tunnel from the foreign controller's perspective?

- A. Transmit Mobile Anchor Export message
- B. Receive Mobile Anchor Export message
- C. Transmit Plumbing duplex mobility tunnel message
- D. Receive Plumbing duplex mobility tunnel message

Answer:

QUESTION 78:

You are configuring an RF group of controllers that coordinate Radio Resource Management calculations. What is the maximum number of WLAN controllers that you can add?

- A. 12
- B. 17
- C. 20
- D. 24

Answer:

QUESTION 79:

Which Cisco Aironet Series devices can be powered using 802.3af inline power?

- A. Cisco Aironet 1100 Series
- B. Cisco Aironet 1300 Series
- C. Cisco Aironet 1400 Series
- D. Cisco Aironet 1240AG Series

Answer:

QUESTION 80:

You are installing a Cisco Aironet 1000 Series controller-based access point. When you boot it, all the LEDs on the access point blink together. What does this indicate about the access point?

- A. normal operation
- B. duplicate IP address
- C. code upgrade in progress
- D. searching for primary controller

Answer:

QUESTION 81:

You have a very few Cisco 7920 wireless IP phones on your network, but lots of wireless laptops. You want to increase the bandwidth available for the laptops by decreasing the bandwidth reserved for the Cisco 7920 phones. What is the lowest percentage of voice-allocated bandwidth you can select on the WLAN controller?

- A. 25 percent
- B. 40 percent
- C. 55 percent
- D. 75 percent

Answer:

QUESTION 82:

Which of the following statements explains why it is normally best to have more than one controller-based access point participate in the containment of one rogue access point?

- A. Multiple controller-based access points will load-balance the containment task using fewer resources than a single access point.
- B. Clients connected to the rogue access point may be out of the range of the controller-based access point providing containment.
- C. Each controller-based access point can handle only a limited amount of clients connected to the rogue access point.
- D. Clients connected to the rogue access point must be able to connect to the containment controller-based access point.

Answer:

QUESTION 83:

Which authentication types are allowed with the Cisco ADU when selecting WPA/WPA2/CCKM under the security options?

- A. Cisco-LEAP, EAP-FAST, EAP-PEAP (GTC), EAP-TLS
- B. Cisco -LEAP, EAP-MD5, EAP-PEAP (GTC), EAP-TTLS
- C. Cisco-LEAP, EAP-PSK, EAP-PEAP (MS-CHAP v2), EAP-TLS
- D. Cisco-LEAP, EAP-FAST, EAP-PEAP (MS-CHAP v2), EAP-TTLS

Answer:

QUESTION 84:

On a Cisco Aironet 802.11 a/b/g wireless LAN client adapter, the status LED and activity LED are alternating on and off. What does this indicate?

- A. The client card has failed.
- B. The client card is not associated to the network.
- C. The driver has been installed incorrectly.
- D. The client card has awakened from power-save mode.

Answer:

QUESTION 85:

You have just finished aligning a Cisco Aironet 1400 Series Wireless Bridge link using installation mode. When you set the link back to operational mode you loose association to the root bridge. Which action will correct the problem?

- A. Configure the proper channel.
 - B. Enable passwords on both bridges.
 - C. Configure the distance parameter value.
 - D. Configure the bridge to force infrastructure devices to associate only to the SSID parameter.
-

QUESTION 86:

Which of the following settings will reduce packet overhead and overall latency in a standalone point-to-point bridge deployment?

- A. enable concatenation on the root bridge only
- B. enable concatenation on the non-root bridge only
- C. enable concatenation on both the root bridge and non-root bridge
- D. enable concatenation on the root bridge and set it as desirable on the non-root bridge
- E. set concatenation as desirable on the root bridge and enable it on the non-root bridge

Answer:

QUESTION 87:

By default, on the WLAN controller for a voice application using Cisco 7921 wireless IP phones, what is the percentage of RF bandwidth that can be dedicated to the phones?

- A. 55 percent
- B. 56 percent
- C. 75 percent
- D. 85 percent

Answer:

QUESTION 88:

When configuring Cisco Secure ACS to support wireless EAP authentication, which device must be configured as a AAA client?

- A. Wireless Control System
- B. Wireless clients
- C. Wireless controllers
- D. Control-based access points
- E. Location Appliance

Answer:

QUESTION 89:

What is the maximum number of wireless controllers that the highest-end Cisco WCS server can manage?

- A. 35
- B. 50
- C. 100
- D. 250

Answer:

QUESTION 90:

On a WLAN controller, what is the default roaming bandwidth percentage reserved for voice clients?

- A. 6 percent
- B. 12 percent
- C. 18 percent
- D. 24 percent

Answer:

QUESTION 91:

You are trying to change the polling parameters used by the location manager via the Cisco WCS, and your request is being denied. What is wrong?

- A. Your login does not have the correct permissions.
- B. You must wait for the location server to become available.
- C. Polling values can be changed only on the location server.
- D. Polling values can be changed only in the maintenance window.

Answer:

QUESTION 92:

If all client exclusion policies are enabled, on which number of tries will 802.1X authentications be excluded using controller-based access points?

- A. three
- B. four
- C. five
- D. six

Answer:

QUESTION 93:

On a Cisco Aironet 1240AG Series standalone access point, the radio LED is dark blue and blinking, but the status LED and Ethernet LED are both off. What does this indicate?

- A. A firmware upgrade is in progress.
- B. An access point buffer overflow is occurring.
- C. The internal radio has failed.
- D. The access point is booting.

Answer:

QUESTION 94:

How many RADIUS servers can be added to a controller and thereafter assigned to the authentication or accounting of individual WLAN IDs?

- A. 14
- B. 15
- C. 16
- D. 17

Answer:

QUESTION 95:

You are troubleshooting a one-way call problem with a Cisco 7920 wireless IP phone on a standalone WLAN. What may cause this problem?

- A. The minimum data rate is not set to 11 Mbps.
- B. An address resolution protocol has been disabled
- C. Publicly Secure Packet forwarding is enabled
- D. The access point is set to the least congested channel.

Answer:

QUESTION 96:

Which command will enable DHCP debugging on a WLAN controller?

- A. debug dhcp enable
- B. debug dhcp status enable
- C. debug dhcp packet enable
- D. enable debug dhcp packet

Answer:

QUESTION 97:

Clients using Cisco-LEAP and EAP-FAST authentication are having no problems logging on to the wireless network, but clients using PEAP are failing to log on. Which situation would result in this type of problem?

- A. The AAA server is set to accept both MS-CHAP v2 and GTC for PEAP authentication.
- B. Clients have been set to validate the server identity.
- C. Posture validation has not been enabled.
- D. Clients and server are not using certificates.

Answer:

QUESTION 98:

A Cisco WCS version 4.0 has been installed on a server with a dual Pentium 3.0 GHz processor, 4GB RAM, and an 80 GB hard drive. A location appliance has been incorporated into the network and is being monitored by the Cisco WCS. There are 3000 devices to be tracked but not all of them are being tracked on the Cisco WCS. What can be done to correct the problem?

- A. Add 4GB RAM to the Cisco WCS.
- B. Add a 120 GB hard drive to the Cisco WCS.
- C. Add a new location appliance.
- D. Add a new Cisco WCS server dedicated to the location appliance.

Answer:

QUESTION 99:

When optimizing a standalone point-to-multipoint bridge installation with eight non-root

bridges, which of the following RTS threshold and CWmin settings would be correct for the non-root bridges?

- A. RTS threshold=4000, CWmin=3
- B. RTS threshold=1, CWmin=4
- C. RTS threshold=4000, CWmin=5
- D. RTS threshold=1, CWmin=5

Answer:

QUESTION 100:

What is the correct order of steps for upgrading a Cisco WCS

- A. back up the database, stop the WCS, upgrade the WCS, restore the database, start the WCS
- B. stop the WCS, back up the database, upgrade the WCS, restore the database, start the WCS
- C. back up the database, stop the WCS, upgrade the WCS, start the WCS, restore the database
- D. stop the WCS, back up the database, upgrade the WCS, start the WCS, restore the database

Answer:

QUESTION 101:

Which protocol does the RADIUS server use inside the secure tunnel of EAP-FAST to authenticate the client when one-time passwords are in use?

- A. MS-CHAP v2
- B. PAP
- C. GTC
- D. MD5

Answer:

QUESTION 102:

When configuring a WLAN controller for a voice application using Cisco 7920 wireless IP phones, which two general control settings should you select? (Choose two.)

- A. Aggressive Load Balancing on
- B. Aggressive Load Balancing off
- C. Multicast on
- D. Multicast off

- E. AP Fallback on
- F. AP Fallback off

Answer:

QUESTION 103:

You are charged with implementing a secure wireless installation which will provide Internet access to client devices but will not allow communications between wireless clients. In addition to implementing PPSF or peer-to-peer blocking on the wireless side, which of the following actions should you perform on the wired infrastructure?

- A. Take no action, you have achieved your goal.
- B. Implement a Cisco Secure IPS sensor.
- C. Implement a protected port on the access switches.
- D. Implement 802.1X on the switch ports.

Answer:

QUESTION 104:

You are troubleshooting a problem with a Cisco 7920 wireless IP phone that is causing the phone to drop calls. The problem appears to be roaming bandwidth issue. In order to verify what kind of issue it is, you decide to increase the bandwidth reserve for roaming on the WLAN controller to maximum. What level do you set the bandwidth to?

- A. 5 percent
- B. 15 percent
- C. 25 percent
- D. 35 percent

Answer:

QUESTION 105:

You want to dynamically assign users to an 802.1Q VLAN as a result of their authentication. In order to accomplish this, which two IETF RADIUS attributes should you configure on the Cisco Secure ACS? (Choose two.)

- A. 064 Tunnel-Type
- B. 066 Tunnel-Client-Endpoint
- C. 067 Tunnel-Server-Endpoint
- D. 081 Tunnel-Private-Group-ID
- E. 082 Tunnel-Assignment-ID
- F. 083 Tunnel-Preference

Answer:

QUESTION 106:

A client roams from H-REAP AP1 to H-REAP AP2. The client is unable to associate to H-REAP AP2. H-REAP AP2 has six other clients associated to it, which continue to pass traffic. What has caused this problem?

- A. H-REAP AP1 lost its connection to the controller.
- B. H-REAP AP2 lost its connection to the controller.
- C. H-REAP AP1 has reached its client limit.
- D. H-REAP AP2 has reached its client limit

Answer:

QUESTION 107:

You are configuring a wireless LAN controller for QoS. Which 802.11e user priority tag should you apply to voice applications?

- A. 1
- B. 3
- C. 4
- D. 6

Answer:

QUESTION 108:

You are using ADU and are authenticated and associated to an access point. However, you are unable to obtain an IP address. Which of these has caused this problem?

- A. invalid SSID
- B. invalid 802.1X authentication type
- C. invalid encryption type
- D. invalid WEP key

Answer:

QUESTION 109:

Which parameter, when enabled on a standalone access point, gives the highest priority to a voice packet even when QoS is not enabled?

- A. QoS Element for Wireless Phones

- B. IGMP Snooping
- C. WMM
- D. AVVID Priority Mapping

Answer:

QUESTION 110:

You review the Failed Attempts logs on an AAA server and find: "unknown network access server error." Which failure could produce this error?

- A. failure of the wireless client and AAA server handshake
- B. supplicant authentication failure
- C. AAA client and AAA server handshake
- D. Wrong password used by the supplicant

Answer:

QUESTION 111:

If it is properly deployed, a controller-based access point is capable of monitoring all VLANs on a network when you select which of the following modes from the AP Mode drop-down menu on the controller?

- A. Monitor
- B. Rogue Detector
- C. Sniffer
- D. Mirror

Answer:

QUESTION 112:

On a WLAN controller, what is the default limit on the number of entries in the database that will be used for local authentication?

- A. 50
- B. 128
- C. 512
- D. 1024

Answer:

QUESTION 113:

Which Cisco Aironet Series has a built-in digital thermometer designed to protect the

radio?

- A. Cisco Aironet 1500 Series
- B. Cisco Aironet 1400 Series
- C. Cisco Aironet 1300 Series
- D. Cisco Aironet 1200 Series

Answer:

QUESTION 114:

A Cisco 4404 WLAN controller is being connected to a Cisco 6500 Catalyst Series Switch. How would you interconnect and configure LAG for connectivity and ensure redundancy?

- A. All four ports from the Cisco WLC terminated to the same Catalyst gigabit module and channel group.
- B. All four ports from the Cisco WLC terminated to the same Catalyst gigabit module using two channel groups.
- C. Ports 1 and 2 from Cisco WLC to Catalyst gigabit module slot 1 channel group 20 and Cisco WLC ports 3 and 4 to Catalyst gigabit module slot 2 channel group 40.
- D. Ports 1 and 2 from Cisco WLC to Catalyst gigabit module slot 1 channel group 10 and Cisco WLC ports 3 and 4 to Catalyst gigabit module slot 2 channel group 10.

Answer:

QUESTION 115:

Which of the following commands on the wireless interface of a Cisco 3845 Integrated Service Router allows the SSID to broadcast?

- A. `router(config-ssid)# enable`
- B. `router(config-ssid)# advertise`
- C. `router(config-ssid)# broadcast`
- D. `router(config-ssid)# guest-mode`

Answer:

QUESTION 116:

You have been called upon to add location-based services into an existing controller-based wireless design which primarily encompasses handheld devices such as barcode scanners and Cisco 7920 wireless IP phones. In which mode should you deploy the additional access points to achieve the density required without excessive co-channel interference?

- A. sniffer mode
- B. monitor mode
- C. location mode
- D. tracking mode

Answer:

QUESTION 117:

What is the maximum number of WLAN controllers that can join a single mobility group?

- A. 12
- B. 24
- C. 36
- D. 48

Answer: