

Actualtests.com

The Power of Knowing



Exam : 642-176

Title : SMB Engineer exam

Ver : 11.02.07

QUESTION 1

Exhibit:

Hidden Sites:		Show All	Add to Display	Displayed Sites:		Site Main	Hide from Display
Site: Site Main				Status: Completed			
No.	Product ID	Description	Verified?	Qty	Price (\$)	Action	
1	C3845-VSECK9	3845 Voice Security Bundle,PVDM2-64,Adv IP Serv,64F/256D	✓	1	22,163.00	Reconfigures View	
1.0	C3845-VSECK9	3845 Voice Security Bundle,PVDM2-64,Adv IP Serv,64F/256D		1	15,495.00		
1.1	VVIC-2MFT-11	2-Part 64-4 Multiflex Trunk-T1		2	4,000.00		
1.2	VIC2-2FXS	Pow pci Voice Interface Card,FXC		1	400.00		
1.3	CAR-AC	Power Card 110W		1	0.00		

You work as a network technician at Certkiller .com. Please study the exhibit carefully. Which three of these are accurate description of values that you will find in the verified column for different types of products? (Choose three.)

- A. If the solution is configured and orderable, a check mark will be displayed.
- B. If the configuration is incomplete, the words "Not Configured" will be displayed
- C. If the part is a non-configurable part, the words "Not configurable" will be displayed
- D. If the solution is not orderable, a check mark will be displayed
- E. If the configuration is complete, the word Done will be displayed
- F. If the solution is not configured, a check mark will be displayed

Answer: A,B,C

QUESTION 2

Which routing method is used to determine the forwarding paths for IP traffic in a Secure Cisco Single-Site Network foundation solution with remote teleworkers?

- A. RIP
- B. EIGRP
- C. OSPF
- D. Static and default routes

Answer: D

QUESTION 3

DRAG DROP

You work as a network technician at Certkiller .com. Your boss, Mrs. Certkiller, is interested in WAN Services.

Match the appropriate WAN Services with the correct service type.

Options, select from these

Asynchronous Transfer Mode	Cable
Frame Relay	Digital Subscriber Line
Metro Ethernet	Wireless

Best Effort Service

<i>Place here</i>
<i>Place here</i>
<i>Place here</i>

Guaranteed Service

<i>Place here</i>
<i>Place here</i>
<i>Place here</i>

Answer:

Best Effort Service

Cable
Digital Subscriber Line
Wireless

Guaranteed Service

Asynchronous Transfer Mode
Frame Relay
Metro Ethernet

QUESTION 4

The recommended WAN Access method for a simplified and cost effective Cisco Single-site Secure Network Foundation Deployment provides which type of Service?

- A. Low Latency
- B. Best-Effort
- C. Guaranteed Quality
- D. Guaranteed Bandwidth

Answer: B

QUESTION 5

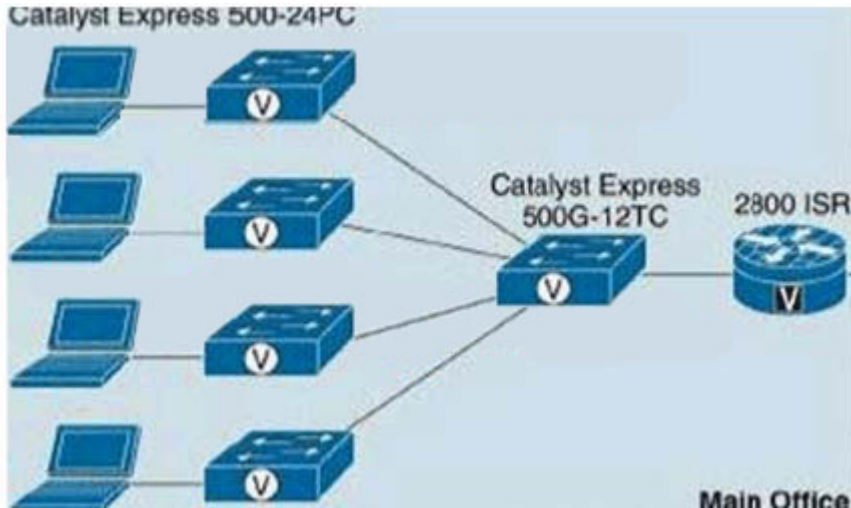
You are designing a solution that needs to support 30 IP phone users. Which switch model and how many switches does the Cisco Single-Site Secure Network Foundation 1.1 Design and Implementation Guide suggest for the solution?

- A. 1 Catalyst Express 500G-12TC,1 Catalyst 3750G-12S-S
- B. 1 Catalyst 3750G-12S-S, 1 Catalyst Express 500-24PC
- C. 2 Catalyst Express 500G-12TC
- D. 1 Catalyst 3750G-12S-S, 1 Catalyst Express 500-24PC
- E. 2 Catalyst Express 500-24PC
- F. 2 Catalyst 3750G-12S-S

Answer: E

QUESTION 6

Exhibit:



You work as a network technician at Certkiller .com. Please study the exhibit carefully. All of the computing devices shown are on the same logical network, as if they were all connected to the same switch. Which two features make this possible? (Choose two.)

- A. PAT
- B. 802.1Q
- C. Spanning-tree
- D. VLANs
- E. QoS

Answer: B,D

QUESTION 7

If voice and data traffic will be sent and received via a WAN links, what must be configured to provide a certain amount of dedicated bandwidth and to prioritize the voice traffic over other types of network traffic?

- A. IPSec VPN
- B. QoS mechanism
- C. Firewall
- D. NAT
- E. EIGRP routing protocol

F. Static routing

Answer: B

QUESTION 8

DRAG DROP

You work as a network technician at Certkiller .com. Your boss, Mrs. Certkiller, is interested in UTP categories.

Match the appropriate environments with the correct UTP category.

Options, select from these

Capable of transmitting data at speeds up to 100 Mbps

Consists of four pairs of 24-gauge copper wires, which transmit data at speeds up to 1000 Mbps

Used for telephone communications, not suitable for transmitting data

Used in 10Base-T networks can transmit data at speeds up to 10 Mbps

Used in networks running at speeds up to 1000 Mbps (1 Gbps)

Definitions

Category 1

Options, place here

Place here

Category 3

Place here

Category 5

Place here

Category 5e

Place here

Category 6

Place here

Answer:

Definitions	Options, place here
Category 1	Used for telephone communications, not suitable for transmitting data
Category 3	Used in 10Base-T networks can transmit data at speeds up to 10 Mbps
Category 5	Used in networks running at speeds up to 1000 Mbps (1 Gbps)
Category 5e	Consists of four pairs of 24-gauge copper wires, which transmit data at speeds up to 1000 Mbps
Category 6	Used in networks running at speeds up to 1000 Mbps (1 Gbps)

QUESTION 9

You are designing a solution that needs to support a full-rate T3 connection. Which router model does the Cisco Single-Site Secure Network Foundation 1.1 Design and Implementation Guide suggest for this solution?

- A. Cisco 2821
- B. Cisco 2811
- C. Cisco 3845
- D. Cisco 2801
- E. Cisco 2851
- F. Cisco 3825

Answer: C

QUESTION 10

When resetting a Catalyst Express switch to factory default settings, which three options are available from the Software Recovery window? (Choose three.)

- A. Boot to a password recovery window
- B. Boot with the factory default image
- C. Erase the system configuration and boot with the factory default IOS image
- D. Erase the system configuration and boot from a TFTP-supplied IOS image
- E. Erase the System Configuration

Answer: B,C,E

QUESTION 11

Which statement correctly describes network security settings in Cisco Network

Assistant for the Catalyst Express 500 Switch?

- A. The LOW setting enables broadcast storm control, but has no effect on the number of devices that can connect to a switch port
- B. The LOW setting enables broadcast storm control and limits the number of devices that can connect to a switch port.
- C. The LOW setting disables broadcast storm control but limits the number of devices that can connect to a switch port
- D. The default network setting is "HIGH"

Answer: B

QUESTION 12

In an environment in which multiple VLANs have been defined on Catalyst Express 500 switches, which two statements are correct for ports that have been configured with the Smartport role of "IP Phone + Desktop"? (Choose two.)

- A. The names of the VLANs used by the SmartPorts are case insensitive
- B. The ports may belong to a configurable data VLAN
- C. The names of the VLANs used by the Smartports are not relevant
- D. The ports may belong to many VLANs, depending on how many PCs are connected to each port.
- E. The names of the VLANs used by the Smartports are case sensitive

Answer: B,E

QUESTION 13

DRAG DROP

You work as a network technician at Certkiller .com. Your boss, Mrs. Certkiller, is interested in SMB wireless solutions. You are required to produce the correct order for performing a Technology Strategy Development.

Choose only steps that apply.

Steps, Select from these

- Determine Banners to WLAN implementation
- Develop WLAN Technology Strategy
- Identify WLAN Business Savings
- Present WLAN Technology Strategy
- Preliminary Technical Discovery
- Obtaub Signoff from Key Stakeholders
- Technology Strategy Meeting

Steps, place here

- Place first step here
- Place second step, if any, here
- Place third step, if any, here
- Place fourth step, if any, here
- Place 5th step, if any, here
- Place 6th step, if any, here
- Place 7th step, if any, here

Answer:

Steps, Select from these

- Preliminary Technical Discovery
- Obtaub Signoff from Key Stakeholders
- Technology Strategy Meeting

Steps, place here

- Identify WLAN Business Savings
- Present WLAN Technology Strategy
- Develop WLAN Technology Strategy
- Determine Banners to WLAN implementation
- Place 5th step, if any, here
- Place 6th step, if any, here
- Place 7th step, if any, here

QUESTION 14

Exhibit:



You work as a network technician at Certkiller .com. Please study the exhibit carefully. Which Cisco SDM Configuration task would you use to enable access and inspection rules on the WAN interface, preventing any external traffic from entering the network unless that traffic is a reply to a session that originated in the internal network?

- A. Additional Task
- B. Interface and Connections
- C. Routing
- D. NAT
- E. Firewall and ACL
- F. VPN

Answer: E

QUESTION 15

When enabling IPS on an ISR using the Cisco SDM IPS Wizard, in what location can the SDF be placed?

- A. On the RAM of the ISR

- B. On the USB memory stick of the ISR
- C. On the NVRAM of the ISR
- D. On the IPS Module of the ISR
- E. On the Flash memory of the ISR

Answer: E

QUESTION 16

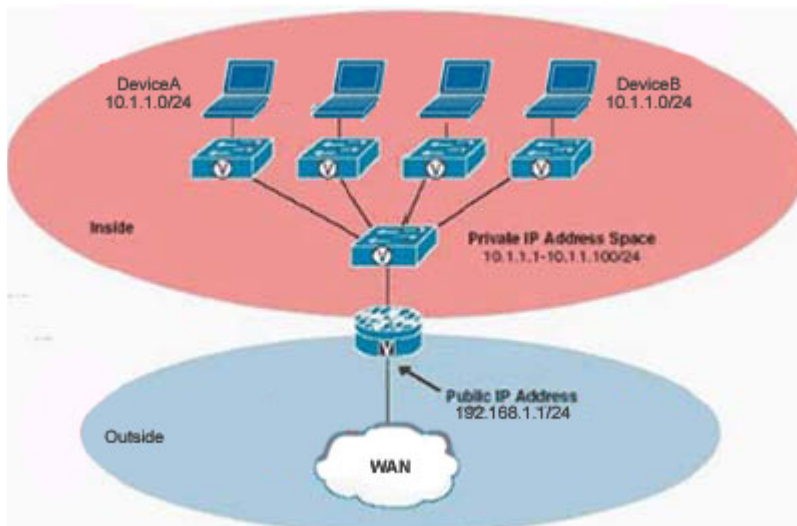
During which phase of the Steps to Success methodology for Cisco SMB Security Solutions would the Security Technology Requirements document be used to determine a customer's security requirements?

- A. Perform
- B. Position
- C. Develop
- D. Prepare
- E. Plan
- F. Design

Answer: E

QUESTION 17

Exhibit:



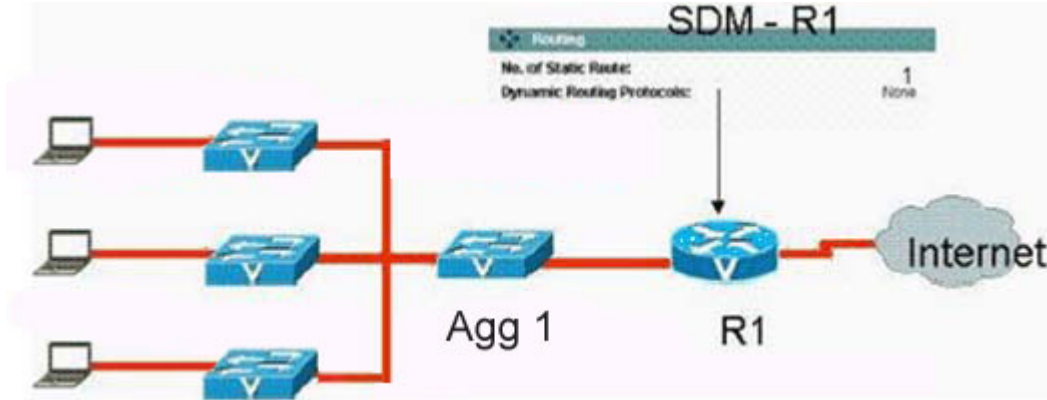
You work as a network technician at Certkiller .com. Please study the exhibit carefully. The exhibit is an example of which technology being implemented?

- A. Spanning-tree
- B. 802.1Q
- C. VLANs
- D. PAT
- E. QoS

Answer: D

QUESTION 18

Exhibit:



You work as a network technician at Certkiller .com. Please study the exhibit carefully. Which two statements correctly identify the reasons why there is only one static route and there are no dynamic protocols for the configuration shown?(Choose two.)

- A. The configuration has not been completed yet on the router
- B. There is only one entry and exit path to the service provider, so one static route is sufficient
- C. The LAN functions at L3, so dynamic routing does not need to be enabled
- D. Switch Agg 1 and R1 have not achieved L3 adjacency yet, thus whatever routing protocol has been configuration on R1 is not completely up
- E. There is only one L3 device, thus dynamic routing is not needed

Answer: B,E

QUESTION 19

During which phase of the steps to success methodology for Cisco SMB security solutions would the Network Readiness Assessment be used to assess the readiness of an existing network infrastructure and determine which, if any, modification should be made prior to implementation?

- A. Position
- B. Prepare
- C. Design
- D. Perform
- E. Plan

Answer: E

QUESTION 20

When determining a customer's security requirements using the security site survey from

the steps for success methodology, which three of these should be included in the customer's security policy and procedures? (Choose three.)

- A. Third-party due diligence policy review
- B. Remote Access Policy
- C. Encryption Policy
- D. Application change control policy
- E. Security Personnel policy

Answer: A,B,D

QUESTION 21

DRAG DROP

You work as a network technician at Certkiller .com. Your boss, Mrs. Certkiller, is interested network security mechanisms. You are required to match the correct mechanism with the proper description.

Options, select from these

Firewall

IPS

Infrastructure-Protection

IPSec VPN

Definitions

Prevents unwanted access to the internal networks from the Internet

Provides secure connectivity

Protects network devices from attacks

Prevents virus and worms

Options place here

Place here

Place here

Place here

Place here

Answer:

Definitions	Options place here
Prevents unwanted access to the internal networks from the Internet	Firewall
Provides secure connectivity	IPSec VPN
Protects network devices from attacks	Infrastructure-Protection
Prevents virus and worms	IPS

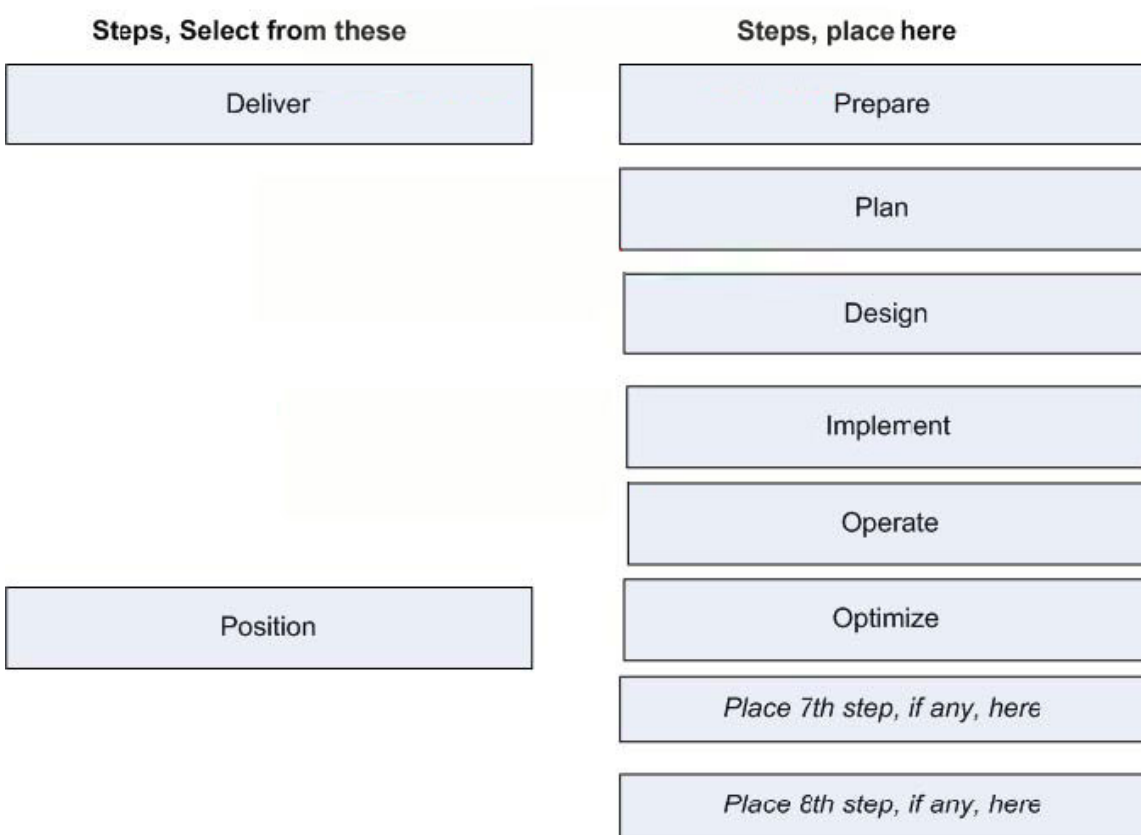
QUESTION 22

DRAG DROP

You work as a network technician at Certkiller .com. Your boss, Mrs. Certkiller, is interested Success Methodology phases steps. You are required to produce the correct in which the appropriate phases takes place Use only steps that apply.

Steps, Select from these	Steps, place here
Deliver	<i>Place first step here</i>
Design	<i>Place second step, if any, here</i>
Prepare	<i>Place third step, if any, here</i>
Optimize	<i>Place fourth step, if any, here</i>
Operate	<i>Place 5th siep, if any, here</i>
Position	<i>Place 6th siep, if any, here</i>
Implement	<i>Place 7th siep, if any, here</i>
Plan	<i>Place 8th siep, if any, here</i>

Answer:



QUESTION 23

When using the steps to success methodology, where does Quote Builder fit into the deal process flow?

- A. It encompasses the validate and solve steps
- B. It encompasses the Discovery, Validate and Solve steps
- C. It encompasses the Discover, Validate, Solve and Present Steps
- D. It encompasses the Discovery, Solve and Close steps
- E. It encompasses the Discovery, Validate and Present Steps

Answer: A

QUESTION 24

Which three of these pre-requisite for resetting a Catalyst Express 500 switch when Cisco Network Assistant is unavailable? (Choose three.)

- A. At Least one enabled switch port that is unconnected to any device
- B. A PC pre-configured with a specific IP Address and Mask
- C. A PC or laptop with Windows 2000 or Windows XP installed and a web browser that has Java Script enabled
- D. Physical Access to Switch
- E. A Switch with no connected devices

Answer: A,C,D

QUESTION 25

To protect the network from external and internal threats, where should Cisco IPS be enabled on an ISR?

- A. Globally on the ISR
- B. On the Console and Auxiliary Ports of the ISR
- C. On the untrusted (Outside) interface of the ISR
- D. On the trusted (Inside) interface of the ISR
- E. On the WAN and LAN interfaces of the ISR

Answer: E

QUESTION 26

Which two WAN access methods are specified for a simplified and cost-effective Cisco Single-Site Secure Network Foundation Deployment Design? (Choose two.)

- A. Frame-Relay
- B. Leased Line
- C. MPLS
- D. DSL
- E. Cable
- F. Wireless

Answer: D,E

QUESTION 27

DRAG DROP

You work as a network technician at Certkiller .com. Your boss, Mrs. Certkiller, is interested in WAN devices.

Match the appropriate WAN device with the correct description.

Options, select from these

Modem

Frame Relay Switch

DSU/CSU

CPE

Definitions

Converts digital into analog transmission and then converts this analog to digital at the receiving end

Used with the cloud to support access services

Edge services on subscriber premises

Used on digital WAN Services

Options place here

Place here

Place here

Place here

Place here

Answer:

Definitions

Converts digital into analog transmission and then converts this analog to digital at the receiving end

Used with the cloud to support access services

Edge services on subscriber premises

Used on digital WAN Services

Options, place here

Modem

CPE

DSU/CSU

Frame Relay Switch

QUESTION 28

DRAG DROP

You work as a network technician at Certkiller .com. Your boss, Mrs. Certkiller, is interested in port types.

Match the appropriate port type with the correct function.

Options, select from these

10/100 PoE port

10/100/100Base-T port

Definitions

Closed-circuit TV camera connectivity

Externally powered wireless access point connectivity

Server connectivity

IP telephony connectivity

Uplink connectivity

Options, place here

Place here

Place here

Place here

Place here

Place here

Answer:

Options, select from these

10/100 PoE port

10/100/100Base-T port

Definitions

Closed-circuit TV camera connectivity

Externally powered wireless access point connectivity

Server connectivity

IP telephony connectivity

Uplink connectivity

Options, place here

10/100 PoE port

10/100 PoE port

10/100/100Base-T port

10/100 PoE port

10/100/100Base-T port

QUESTION 29

During which phase of the steps to success methodology for Cisco SMB Security Solutions would the Network Readiness Assessment be used to assess the readiness of an existing network infrastructure and determine which, if any modification should be prior to implementation?

- A. Prepare
- B. Design
- C. Position
- D. Develop
- E. Plan
- F. Perform

Answer: A

QUESTION 30

Exhibit.



Please study the exhibit.

Which Cisco SDM configuration task is used to enable the translation of the inside network private IP address to the public IP address?

- A. Firewall and ACL
- B. NAT
- C. Routing
- D. Interface and connections

- E. VPN
- F. Security Audit

Answer: B

QUESTION 31

Please study the exhibit.



What are two options available when using the Security Audit Configuration task in Cisco SDM? (Choose two.)

- A. Perform a One-step lockdown on the Router
- B. Perform a Virus Scan
- C. Perform a Secure audit on the Router
- D. Perform a Denial Of Service attack on the Router to verify that it is protected
- E. Perform a real-time inspection of incoming traffic destined for the router

Answer: A,C

QUESTION 32

When determining a customer's technical requirements for a Cisco Unified Communications solution, which important tool can be used to determine the bandwidth used by different codecs with various protocols over different media?

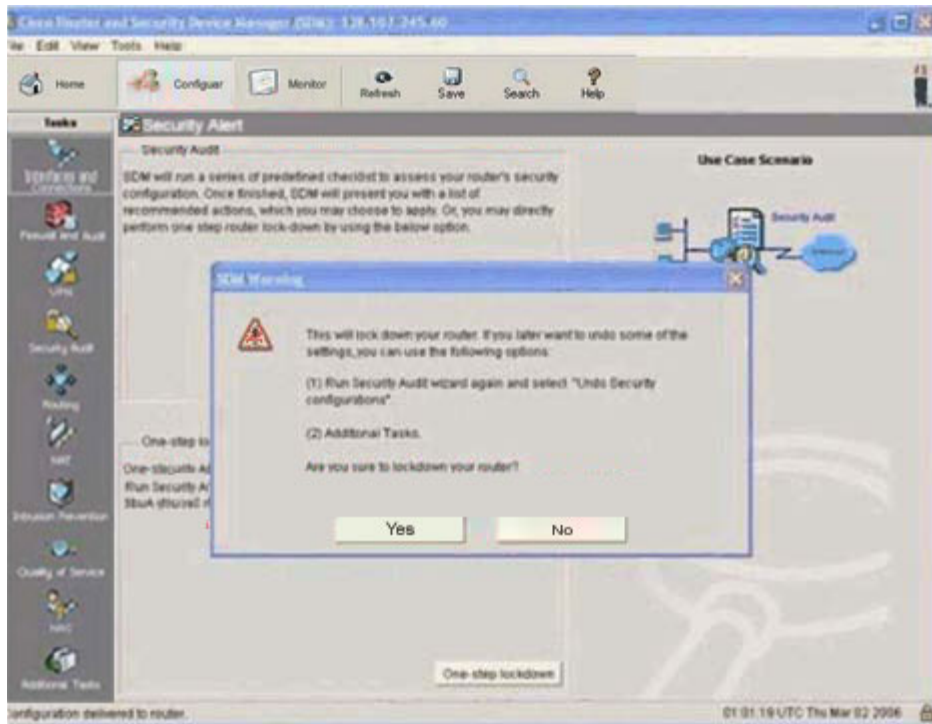
- A. Network Codec Aggregator Tool

- B. Bandwidth Estimator Tool
- C. Unified Communication Bandwidth Tool
- D. Voice Bandwidth Calculator
- E. Voice Codec Bandwidth Calculator

Answer: D

QUESTION 33

Exhibit:



You work as a network technician at Certkiller .com. Please study the exhibit carefully. What does "locking Down" the router entail?

- A. Disabling HTTPS access to Cisco SDM
- B. Prohibiting console access to Router
- C. Preventing any alterations to the router's running configuration
- D. Disabling all vulnerable Services on the Router
- E. Shutting down all the router's interfaces

Answer: D

QUESTION 34

Your Customer has 21 users, each requiring both PC and IP Phone connectivity. Which is the correct configuration for this customer?

- A. 1 Cisco 2811 ISR, 1 Catalyst Express 500G-12TC, 2 Catalyst Express 500-24PC
- B. 1 Cisco 2851 ISR, Catalyst Express 500G-12TC, 3 catalyst Express 500-24PC
- C. 1 Cisco 2821 ISR, Catalyst Express 500G-12TC, 2 Catalyst Express 500-24PC

D. 1 Cisco 2801 ISR, 1 Catalyst Express 500-24PC

Answer: D

QUESTION 35

When using Cisco Network Assistant to configure a WS-CE500-24LC switch, which three are available choices in the port settings window? (Choose three.)

- A. Duplex mode selections
- B. Auto MDIX selections
- C. Status Selections
- D. Group mode selections
- E. Port security selections

Answer: A,B,C

QUESTION 36

Which statements describes the remote sites in a Cisco Single-Site Secure Network Foundation solution with remote teleworkers?

- A. They are separate from the central site and use NAT to route through the Internet to the Central Site
- B. They are part of the VLANs at the Central Site; they are in the same subnets
- C. They use public IP Addresses that are routable through the Internet
- D. They are in separate subnets but are part of the private address space of the network

Answer: D

QUESTION 37

Which two statements about 802.1Q trunking in Secure Network Foundation Design Guide for Single Site Deployments are correct?

- A. The Cisco Control VLAN carries only Layer 2 control traffic
- B. 802.1Q trunking is used between the access switch and the router
- C. There is no 802.1Q trunking used in these designs
- D. When 802.1Q trunks are configured, they are also called Native VLANs
- E. Trunking Ensures that traffic from only one VLAN is carried on that trunk

Answer: B

QUESTION 38

Exhibit:



You work as a network technician at Certkiller .com. Please study the exhibit carefully. Which Cisco SDM configuration task would you select to configure a static route to the Service Provider?

- A. NAC
- B. Routing
- C. Intrusion Protection
- D. Quality Of Service
- E. NAT

Answer: B

QUESTION 39

Which WAN connection requires a different interface than the standard interface provided in the Cisco Single-Site Secure Network Foundation deployment design?

- A. Metro Ethernet
- B. DSL
- C. VPN

- D. Cable
- E. Frame-Relay

Answer: E

QUESTION 40

What is the reason for running spanning-tree in a Cisco Single-Site Secure Network Foundation Solution?

- A. To protect the network in case someone inadvertently creates a physical loop in it
- B. To ensure that if a device fails another device automatically take over for it
- C. To allow management of all network devices
- D. To aggregate logical network groups together at one central point

Answer: A

QUESTION 41

Which two statements about configuration an unconnected Catalyst Express 500 switch from setup mode using a PC are true? (Choose two.)

- A. You may use Cisco Network Assistant to set up the initial configuration
- B. You must use CLI for initial configuration
- C. You may use either CLI or CAN for configuration
- D. You may make a direct connection to the PC from any point on the switch
- E. You may only make a direct connection from the port with the flashing green LED to the PC

Answer: A,E

QUESTION 42

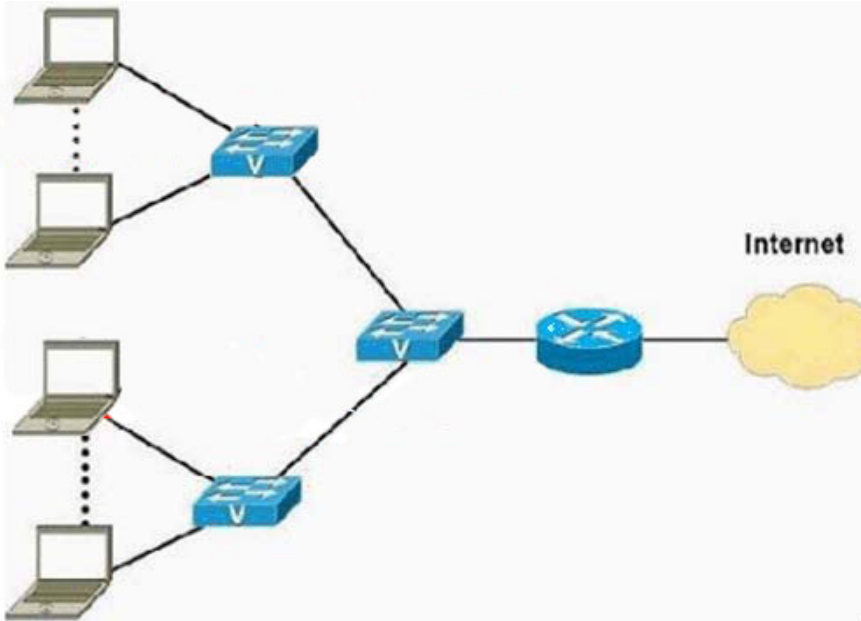
When using Cisco Network Assistant to configure smartports, Which two of the following roles can belong to a VLAN of the type "access" ? (Choose two.)

- A. Phone + Desktop
- B. Desktop
- C. Switch
- D. Router
- E. Trunk

Answer: A,B

QUESTION 43

Exhibit:



You work as a network technician at Certkiller .com. Please study the exhibit carefully. In a Cisco Single-Site Secure Network Foundation implementation, which factor affects your choice of switch Configuration?

- A. Type of Security scheme that is being implemented
- B. Maximum number of supported IP Phones
- C. Maximum Amount of packet latency acceptable
- D. Type of QoS scheme that is being used

Answer: B

QUESTION 44

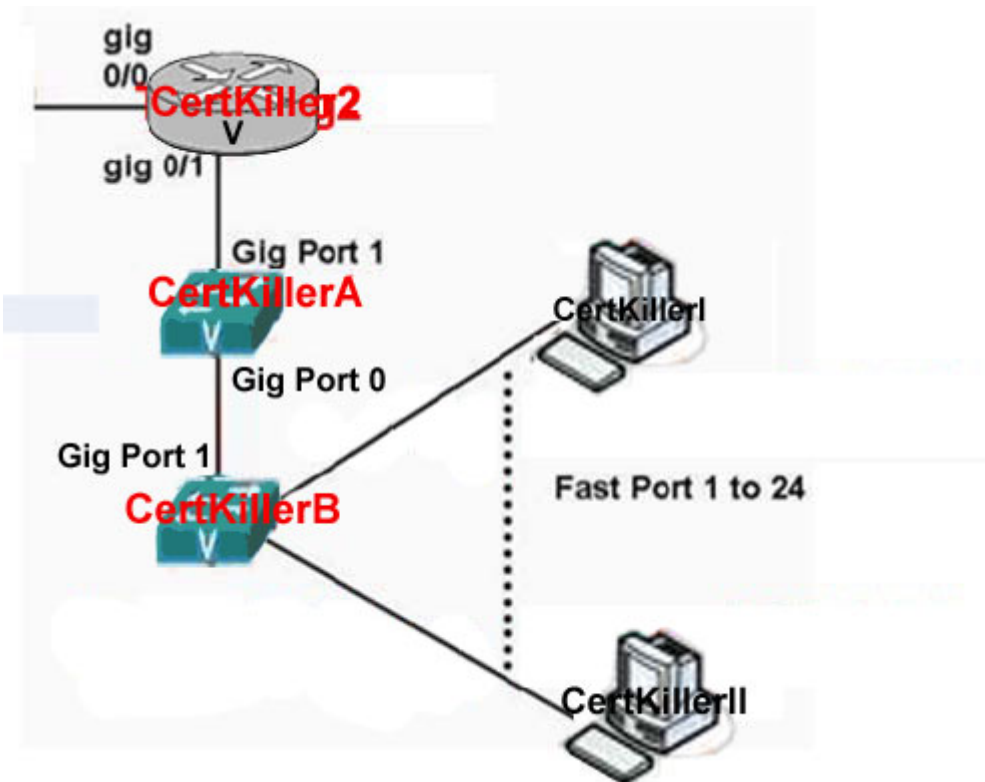
You are designing a solution that needs to support 40 IP phone users. Which routers model does the Cisco Single-Site Secure Network Foundation 1.1 Designing and Implementation Guide suggest for this Solution?

- A. Cisco 3825
- B. Cisco 2851
- C. Cisco 3845
- D. Cisco 2811
- E. Cisco 2821
- F. Cisco 2801

Answer: E

QUESTION 45

Exhibit:



You work as a network technician at Certkiller .com. Please study the exhibit carefully. Which two interfaces are enabled for 802.1Q encapsulation? (Choose two.)

- A. Router Certkiller 2, Gig 0/1
- B. Switch Certkiller B, Fast Port 1 to 24
- C. Sswitch Certkiller A, Gig Port 9
- D. Router Certkiller 2, Gig 0/0

Answer: A,C

QUESTION 46

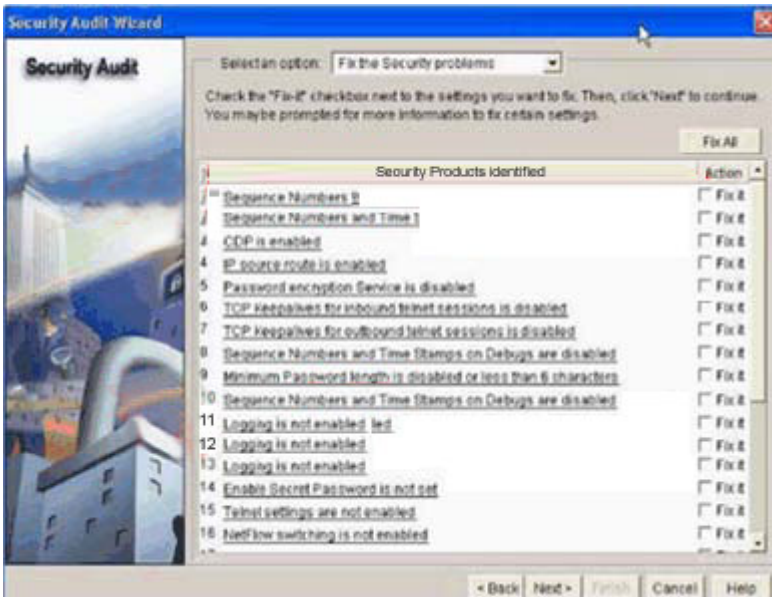
Which three of these are characteristics of UTP cable? (Choose three.)

- A. The wires in each pair are wrapped around each other
- B. An insulating material covers each of the individual copper wires in it
- C. It comes in eight-pair wire bundles
- D. EMI and RFI cause only limited degradation to signals running over it
- E. It comes in seven categories
- F. IT has an external diameter of approximately 0.28 inches

Answer: A,B,D

QUESTION 47

Exhibit:



You work as a network technician at Certkiller .com. Please study the exhibit carefully. From this Cisco SDM security Audit Wizard screen, what should you do to secure the Router?

- A. Click Next
- B. Click Fix All, then Next
- C. Click Fix All, then clear CDP check box, then Next, then manually disable CDP on the WAN interface
- D. Click Fix All, the clear CDP check box, the Next
- E. Click Fix All, then Clear CDP check box, then Next, then Immediately reboot the router

Answer: C

QUESTION 48

Which two statements correctly identify factors to consider when Configuring WAN QoS ? (Choose two)

- A. Voice Traffic uses Assured Forwarding
- B. Voice Signaling traffic uses Assured Forwarding
- C. Voice Signaling traffic uses priority queuing
- D. Voice Traffic uses priority queuing
- E. Voice signaling traffic should use priority queuing with Assured Forwarding

Answer: B,D